

Solids control



Cuttings management

Waste processing

Customer oriented
Quality focused



We are committed to provide all clients with high quality, environmentally responsible products and services continuously.

Our goal:

To design and build the most reliable, efficient drilling mud processing equipment. Convenient operation, easy maintenance and fast moving!

Our Superiority:

- 1, Professional design, fabrication , quality assurance and sales service !
- 2, API certified solids control equipment manufacturer
- 3, Supply API RP 13C replacement screen for almost oilfield shaker
- 4, Customer-oriented, Quality-focused

Hunter Shale Shaker

Hunter-MG Series Shaker

3 or 4 pre-tensioned panel screen as optional
2.04 M2 or 2.73 M2 screen area
Replaceable screen with Mongoose shaker
Composite material screen for longer life
Deck Angle adjustment from -1° to $+5^{\circ}$

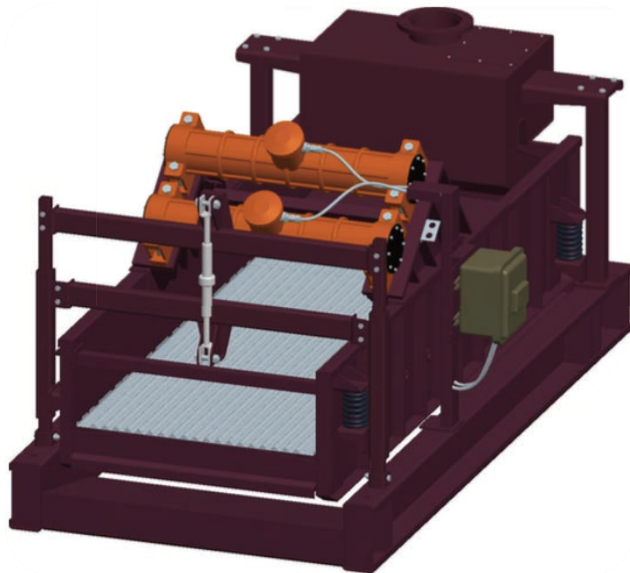


Hunter -D Series Shaker

3 or 4 pre-tensioned panel screen as optional
2.27 M2 or 3.02 M2 screen area
Hook strip type screen installation and interchangeable
with Derrick FLC2000[®] shaker screen. Deck angle
adjustment from -1° to $+5^{\circ}$

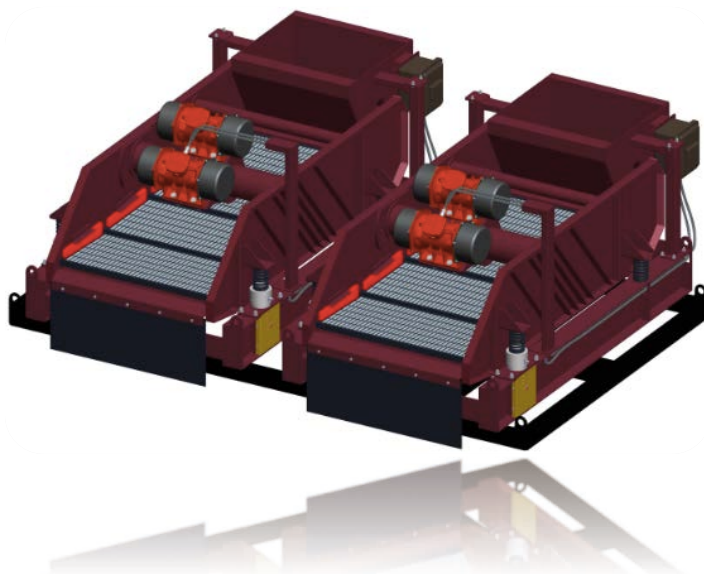
Hunter Mini Shaker

2 pre-tensioned panel screen
1.35 M2 screen area
Deck Angle $+2^{\circ}$



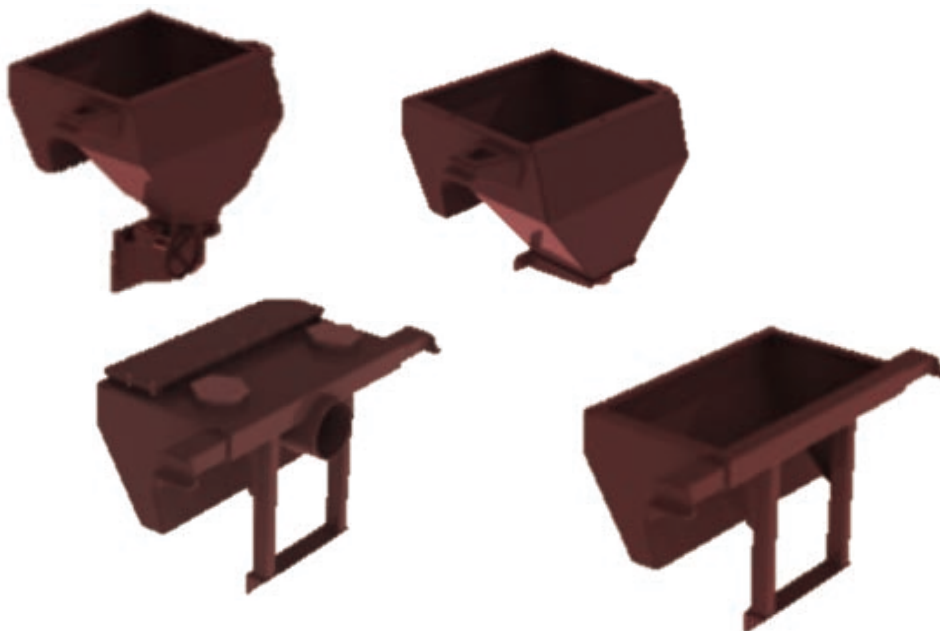
Shale Shaker Specification

Model	Hunter-MG3	Hunter-MG4	Hunter-D3	Hunter-D4	Hunter Mini
Max Capacity	110m ³ /h	140m ³ /h	120m ³ /h	150m ³ /h	60m ³ /h
Screen Area	2.04m ²	2.73m ²	2.27m ²	3.02m ²	1.35m ²
Screen Panel	3	4	3	4	2
Max G Force	7.0G	7.0G / 8.0G	7.0G	7.0G / 8.0G	6.5G
Deck Angle Range	-1 - +5°	-1 - +5°	-1 - +5°	-1 - +5°	+2°
Dimension	2455×1670×1376mm	3040×1670×1376mm	2755×1650×1500mm	3455×1650×1500mm	2455×1670×1376mm
Weight	1560Kg	1785Kg	1650Kg	1880Kg	980Kg



More Options

- ⊙ Vibrator motor-Martin/Oli brand/Ita-Vibras
-Long motor or short motor
- ⊙ Electrical system-Customizable
- ⊙ Steel frame or Composite frame screen
- ⊙ Dual tandem or triple tandem
- ⊙ Surface paint
- ⊙ Weir feeder types
- ⊙ Even more customer built items



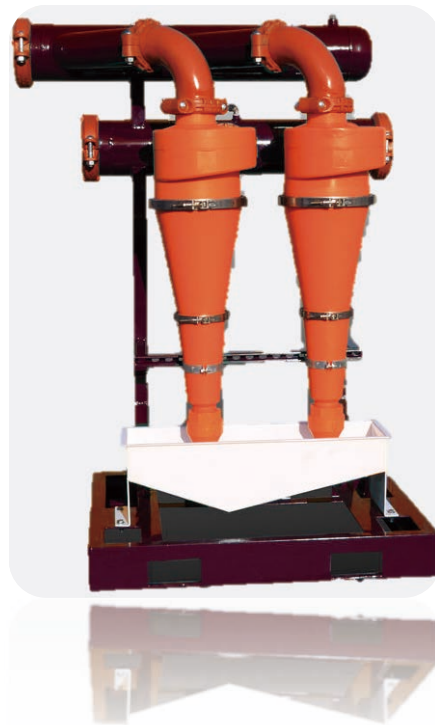
Mud Cleaner



Mud cleaners further process drilling fluid downstream from the shakers. They are engineered to refine slurry through multiple stages of separation by directing flow through the desander (particle size removal to 40 μm) and then the desilter (particle size removal to 20 μm). The discharge from the cones is then screened by the shaker to minimize mud loss.

Model	Hunter50	Hunter90	Hunter120	Hunter200	Hunter240	Hunter320
Capacity	50m ³ /h	90m ³ /h	120m ³ /h	200m ³ /h	240m ³ /h	320m ³ /h
Desilter Cone	100×4	100×6	100×8	100×10	100×12	100×16
Desander Cone	200×2	250×1	250×1	250×2	250×2	250×3
Working Pressure	0.25~0.45 MPa					
Separation Point	15 μm ~74 μm					
Bottom Shaker	Hunter-D or Hunter-MG series					
Vibration Mode	Linear or BEM					
Motor Speed	1500rpm or 1800rpm					
Overall Dimension	1650×1250×1750mm	1650×1250×1900mm	1650×1250×1900	2455×1850×2250	2455×1850×2250	2850×1800×2250
Weight	1100kg	1600kg	1650kg	2100kg	2150kg	2350kg
Remark	4" cone =12~15m ³ /h, 8" cone=30~35m ³ /h,10" cone=90~120m ³ /h. It can be configured according to clients' demand					

Desander



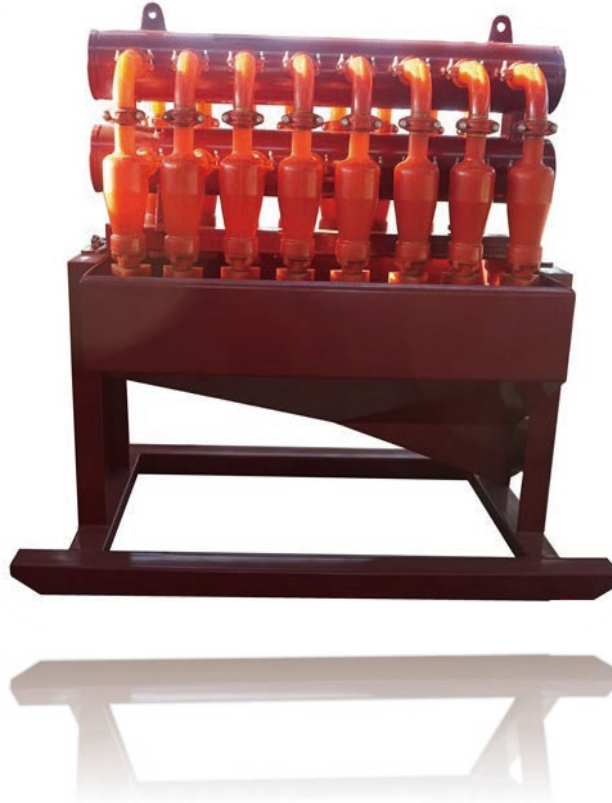
Aipu desander and desilters share a common design steel frame to allow mud inlet and over flow through pipeline , and a collection hopper for solids particles collection and discharge.

Desanders

Located downstream of the shale shakers and degasser, AIPU desander designed for quick installation and easy operation with clamp connection for cyclones , a 10 inch desander cone mud flow capacity 500GPM, separation size 40 microns and above . Cone quantity can be 1, 2 or 3 to make mud flow capacity 500GPM, 1000GPM and 1500GPM.

Model	APCS60	APCS90	APCS120	APCS200	APCS240	APCS320
Capacity	60m ³ /h	90m ³ /h	120m ³ /h	200m ³ /h	240m ³ /h	320m ³ /h
Desander Cone	200x2(8"x2)		250x1(10"x1)		250x2(10"x2)	250x3(10"x3)
Working Pressure	0.25~0.45MPa					
Separation Point	44~74μm					
Bottom Shaker	Hunter-D or Hunter-MG series					
Vibration Mode	Linear Motion or BEM					
Motor Speed	1500rpm or 1800rpm					
Overall Dimension	1650x1250x1900mm			2455x1850x2100mm		
Remark	8"Cone=30~35m ³ /h,10"Cone=90~120m ³ /h. It can be configured according to clients' demand					

Desilter



Desilters

Located downstream of desander, the desilter hydrocyclone removes solids particles above 20 micron, each 4 inch desilter hydrocyclone allows mud flow about 65GPM, cone quantity can be from 4 to 20 with mud flow 200GPM to 1500GPM.

Model	APCN60	APCN90	APCN120	APCN200	APCN240	APCN320
Capacity	60m ³ /h	90m ³ /h	120m ³ /h	200m ³ /h	240m ³ /h	320m ³ /h
Desander Cone	100x4 (4" x4)		100x6 (4" x6)		100x10 (4" x10)	100x16 (4" x16)
Working Pressure	0.25~0.45MPa					
Separation Point	15~44μm					
Bottom Shaker	Hunter-D or Hunter-MG series					
Vibration Mode	Linear Motion or BEM					
Motor Speed	1500rpm or 1800rpm					
Overall Dimension	1650x1250x1600mm			2450x1700x1700mm		
Remark	4" Cone=12~15m ³ /h, 5" Cone=20m ³ /h. It can be configured according to clients' demand					

Decanter Centrifuge



Decanter centrifuge located downstream of desilter with high G force to separate solids particles 2-7 microns. Depending on bowl size and rotating speed, there are different models as bellow:

Model	APLW450×842N	APLW450×1000N	APGLW355×1258D-N	APGLW450×1258D-N	APGLW530×1320D-N
Drum dia.	φ 450mm	φ 450mm	φ 355mm	φ 450mm	φ 530mm
Drum Length	842mm	1000mm	1258mm	1258mm	1320mm
Lambda Ratio	1.9	2.2	3.5	2.8	2.5
Drum Shape	Conical				
Speed	1800rpm	2200rpm	3200rpm	3000rpm	2800rpm
Main Motor	22Kw	30Kw	30Kw	37Kw	55Kw
Accessorial Motor	5.5Kw	7.5Kw	7.5Kw	11Kw	11Kw
Max. Capacity	40m ³ /h	50m ³ /h	35m ³ /h	60m ³ /h	65m ³ /h
Separation Point	5~7microns		2-5microns		
Separation Factor	815G	1215G	2035G	2250G	1817G
Feeding Pump Power (KW)	4 (submersible)		7.5 (submersible)		
Dimension (mm)	2600×1550×1650	2750×1550×1700	2900×1480×1650	2900×1550×1650	3300×1700×1750
Weight	3000kg	3200kg	3000kg	3200kg	4000kg

Key Features

- 1 Easy operation, compact design with small footprint
- 2 Heavy duty, highly energy efficient
- 3 Stainless steel bowl and screw
- 4 Tungsten carbide wear protection

Vertical Cuttings Dryer



Vertical cuttings dryer is designed to dry drilling cuttings out of shale shaker or cyclones with oil content below 5% by weight.

Model	APVCD930	APVCD930-VFD
Capacity	30~50 Tons/H	30~50 Tons/H
Screen Max Dia	930mm	930mm
Rotation Speed	900RPM	0-900RPM
Screen Opening	0.25-0.5mm	0.25-0.5mm
G Force	420G	0-420G
Main Motor	75HP	75HP
Oil Pump Motor	0.75HP	0.75HP
Dimension	2800×1820×2000	2800×1820×2000
Weight	4450Kg	4980Kg

Key Features

- 1, Application for oil base mud mainly
- 2, High G force at 420G
- 3, FAG bearing
- 4, The flights on the rotor is hard facing to HRC65 for longer life

Hunter Hi-G Drying Shaker



High G drying shaker is designed for drilling solids out of shale shaker with water base mud drilling cuttings.

Model	Hunter-MG4-HG	Hunter-D4-HG
Max Capacity	100t/h	100t/h
Screen Area	2.73M2	3.02M2
Screen Panel	4	4
Max G Force	8.0G	8.0G
Deck Angle Range	-1 - +5°	-1 - +5°
Dimension	3040x1670x1376mm	3455x1650x1500mm
Weight	1750KG	18800KG

Key Features

1. High G force up to 8.0G which is adjustable depending on drilling cuttings
2. 4 screens panel for longer drying time and better drying performance

Screw Conveyor



Screw conveyor is designed to delivery drilling cuttings and feed to vertical cuttings dryer or High G dryer for further treatment. Usually, the screw diameter has 3 options : 10 inch, 16 inch, 20 inch; screw length is customer built too, but commonly there are 12~48feet. Furthermore, depends on clients' demand the screw conveyor will be made of different materials. Including carbon steel, stainless steel graded differently.

Model	Screw Conveyor Dia.(mm)	Conveyor Length (mm)	Capacity (t/h)	Power(kw)	Speed (rpm)
APLS250	250	Dpends	20	7.5	60
APLS200	200	Depends	20	11	60
APLS400	400	Dpends	30	11	60
APLS500	500	Dpends	50	15	60

* If you have special requirement please inform us we will provide you customer-built solution

Vacuum Degasser



A vacuum degasser in solids control system that is likely to encounter gas during drilling operation. It removes micro-bubbles on entrained gas, including hydrogen sulfide gas . Depending on tank body diameter & mud flow capacity, AIPU supply 3 models of vacuum degasser

Model	APZCQ240	APZCQ270	APZCQ300	APZCQ360
Max.Capacity	240m ³ /h	270m ³ /h	300m ³ /h	360m ³ /h
Ratio	1.68	1.68	1.68	1.72
Efficiency	≥95%	≥95%	≥95%	≥95%
Main Motor	15KW	22KW	30KW	37KW
Pump Motor	2.2KW	3KW	4KW	5.5KW
Speed	860rpm	870rpm	876rpm	880rpm
Dimension	1750×900×1510mm	1950×1010×1680mm	2250×1235×1650mm	2400×1500×1900mm
Weight	1200kg	1450kg	1960kg	2510kg

Mud Gas Separator



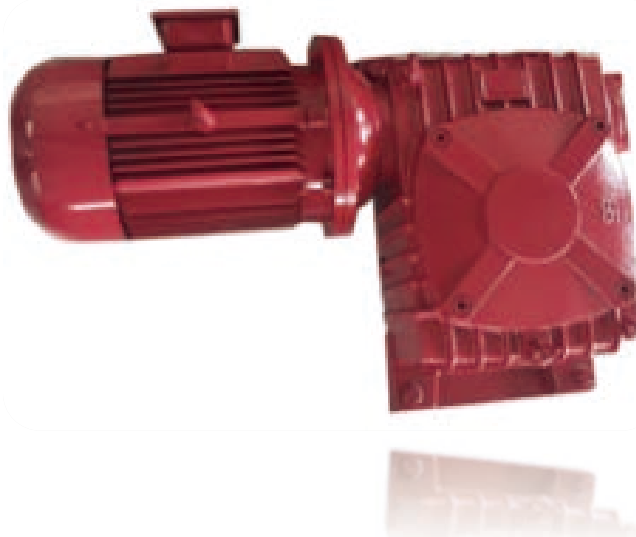
Poor boy degasser is designed for continuous drilling in underbalanced conditions when dramatic pressure surges are normal. In dangerous “kick” conditions, the poor boy degasser allows operators to circulate the drilling fluid by removing large pockets of gas.

There are 3 models option classified by vessel diameter

Model	APMGS800	APMGS1000	APMGS1200
Vessel Dia.	800mm	1000mm	1200mm
Flow Rate	200~260m ³ /h	240~300m ³ /h	280~360m ³ /h
Inlet	5"	5"	5"
Discharge line	8"	8"	10"
Vent Line	8"	8"	8"
Weight	1600kg	2100kg	2800kg
Overall Dimension	1900×1900×5700mm	2000×2000×5860mm	2200×2200×6634mm

* If you do have special requirement please inform us we will provide you customer-built solution

Mud Agitator



Agitator will be mounted on tank. Model and size are relayed on tank's size and mud conditions from 3HP to 30HP normally. Impeller of agitator can be single or double, shaft length will be fabricated according to actual demand.

Model	APMA5.5	APMA7.5	APMA11	APMA15
Motor	5.5KW(7.5hp)	7.5KW(10hp)	11KW(15hp)	15KW(20hp)
Impeller Speed	60/72RPM	60/72RPM	60/72RPM	60/72RPM
Single Impeller	850mm	950mm	1050mm	1200mm
Dual Impeller	N/A	Up:800mm	Up:850mm	Up:950mm
		Down:800mm	Down:850mm	Down:950mm
Ratio	25:1	25:1	25:1	25:1
Dimension	870×600×480mm	906×600×480mm	1075×650×525mm	1170×720×565mm
Shaft Length	Depends on tank depth			
Power System	380V/50HZ,460V/60HZ (Customer built)			
Remark	Explosion proof motor is available, shaft stabilizer is available			

APMA Mud Agitator Features

- ⊙ Reliable material with durable quality
- ⊙ Stable performance
- ⊙ Little spare parts cost
- ⊙ Easy operation with less maintenance
- ⊙ Strict and exquisite painting finishing process
- ⊙ More flexibility on customization of shaft and impellers

More Options

- ⊙ Vertical or horizontal type
- ⊙ Optional shaft and impeller material-
- ⊙ Surface paint

* If you have special requirement please inform us we will provide you customer-built solution

Mud Gun



2inch and 3 inch size low and high pressure mud gun for option, mud gun length can be customized , fixed nozzle or rotating nozzle

Model	NJQ50	NJQ80
Dia.	50mm/2"	80mm/3"
Working Pressure	1.0~6.4Mpa	
Nozzle	1~3	
Rotation	0~360°	

Mud Hopper



Hopper will be working for mixing mud by power of centrifugal pump, venturi nozzle. The venturi nozzle options: grooved; threaded; weld prep. Besides, we also provide customer built hopper

Model	APH600
Hopper Size	600mm
Hopper Type	Venturi or Swirl type for option
Remark	Customizable

* If you have special requirement please inform us we will provide you customer-built solution

Centrifugal Pump



- **Centrifugal Pump:** Aipu supply centrifugal pump powered from 10HP to 100HP, pump size : 3x2, 4x3, 5x4, 6x5, 8x6. There are different performance on pump under different voltage or frequency. Please find below specification under 50 Hz. If you need pump with 60 Hz please call us

Model	Flow Rate	Head	Power	Speed	Efficiency
APSB8x6-14	320 m3/h	40 m	75KW	1480 rpm	65%
APSB8x6-13	240 m3/h	33 m	55KW	1480 rpm	64%
APSB8x6-12	200 m3/h	33m	45KW	1480 rpm	64%
APSB6x5-13	180 m3/h	34 m	45KW	1470 rpm	60%
APSB6x5-12	160 m3/h	30 m	37KW	1470 rpm	60%
APSB6x5-11	120 m3/h	21 m	30KW	1470 rpm	62%
APSB5x4-12	90 m3/h	30 m	22KW	1460 rpm	56%
APSB4x3-13	50 m3/h	40 m	15KW	1460 rpm	48%
APSB4x3-12	45 m3/h	30 m	11KW	1460 rpm	47%
APSB3x2-12	23 m3/h	29 m	7.5KW	1450 rpm	39%

* If you have special requirement please inform us we will provide you customer-built solution

Shear Pump



- **Shear Pump:** It reduces the cost of mixing polymers and clays while improving mud properties, it shear the polymers eliminates fish eyes and prevents polymer chaining which can't pass though the shaker screen. 2 models for options: APJQB6545 and APJQB6535 for different mud flow.

Model	APJQB6545	APJQB6535
Capacity	120m ³ /h	100m ³ /h
Head	45m	35m
Motor	55KW	45KW
Weight	980kg	800kg
Dimension	1150×1100×1500	1150×1100×1250

Screw Pump

- **Screw Pump:** Screw pump is ideal pump to feed decanter centrifuge without shearing or agitating the drilling mud before enter decanter centrifuge.

Model	Speed (rpm)	Capacity (m ³ /h)	Pressure (Mpa)	Head (m)	Motor (KW)	Outlet Flange (mm)	Permitted Solids Dia. (mm)	Fiber Length (mm)
APG35-2	960	8	1.2	120	4	50	3	40
APG40-1		12	0.6	60	4	65	3.8	45
APG40-2		12	1.2	120	5.5	65	3.8	45
APG50-1		20	0.6	60	5.5	80	5	50
APG50-2		20	1.2	120	7.5	80	5	50
APG60-1		30	0.6	60	11	100	6	60
APG60-2		30	1.2	120	15	100	6	60
APG70-1		45	0.6	60	11	125	8	70
APG70-2		45	1.2	120	15	125	8	70
APG85-1		65	0.6	60	15	150	10	80
APG85-2	720	65	1.2	120	18.5	150	10	80
APG105-1		145	0.6	60	22	200	15	110
APG105-2		145	1.2	120	30	200	15	110
APG135-1		350	0.6	60	37	250	20	150
APG135-2		350	1.2	120	45	250	20	150

* If you have special requirement please inform us we will provide you customer-built solution

Submersible Slurry Pump



- **Submersible Slurry Pump:** It is normally used for feeding shale shaker for CBM, HDD or other drilling industry. It is vertical single stage and single suction system and made of abrasion-resistant alloy . The standard length of pump 1.3m but can be customized , the pump is maintenance free and high temperature resistance because no bearing and gland seal between impeller and pump body. Models choose based on required mud flow from 132GPM to 1500GPM.

Model	Flow Rate		Head(m)	Speed(RPM)	Efficiency(%)	Power(kw)
	m ³ /h	L/s				
AP50YZ20-18	20	5.6	18	1430	42	3
AP50YZ25-12	30	8.3	11	1430	38.2	3
AP50YZ50-20	40	11	22	1440	41	7.5
AP65YZ50-12	50	13.8	12	1440	55.9	5.5
AP80YZ80-20	80	22.2	21	1460	55	11
AP80YZ80-20A	90	25	15.6	1460	51	11
AP100YZ100-30A	110	30.6	24	1470	54	18.5
AP100YZ100-30	120	33.3	28	1470	56	22
AP100YZ160-38	160	44.4	39	1480	52	45
AP150YZ250-40B	200	55.6	25	1480	49	37
AP150YZ250-40A	240	66.7	31	1480	50	45
AP150YZ280-20	320	88.9	17	980	57	37

* If you have special requirement please inform us we will provide you customer-built solution

Complete Separation System

No matter what is your application of separation, AIPU will propose you ideal solutions

- **Solids Control System For Oil & Gas Drilling**



Solids control system may contain shale shaker, vacuum degasser, desander, desilter, mud cleaner, decanter centrifuge, pump, mud agitator, mud gun, mud mixer, poor boy degasser, mud tank, etc.

Drilling mud will flow into ground via drilling pipe and bring the cuttings out. Drilling mud is expensive also it will pollute environment we design solids control equipment. Drilling mud system is the blood of well drilling. Solids control system process/purify/recycle/reuse the drilling mud under serial equipment process. Including different phases at different drilling period. Drilling fluid process system will definitely decrease drilling cost and benefit much on conserving environment.

Aipu main personnel have shared over 15 years experience on solids control for oil and gas drilling. The systems will suit ZJ20 to ZJ90, as well as the offshore rig or jack-up platform drilling. We promise clients optimal solution, which is cost-efficient enough.

** If you have special requirement please inform us we will provide you customer-built solution*

- **Mud Recycling System For CBM & HDD & Water Well Drilling**



AIPU supply mud recycling system for CBM & HDD & water well drilling and other drilling that need drilling mud, compact design is the key feature for 200GPM / 350GPM/ 500GPM/ 800GPM/1000GPM/1500GPM/2000GPM mud flow.

Mud Cleaning System For Piling and TBM Drilling



Mud cleaning system for piling and TBM or other construction industry, model options: 500GPM, 100GPM, 1500GPM/2000GPM/3000GPM or customized.

** If you have special requirement please inform us we will provide you customer-built solution*

- **Drilling Waste Management System**



Based vertical cuttings dryer, High G drying shaker, decanter centrifuge, etc. AIPU supply a complete line solution for drilling waste management for both water base mud and oil base mud.

- **Oil Sludge Treatment System**



AIPU supply oil sludge treatment system which can recycle oil from oil sludge and dry solids particles with oil content below 2%

** If you have special requirement please inform us we will provide you customer-built solution*

Screen, Parts, Support



Screen

Proper screen is vital for shale shaker even whole system performance. AIPU provide you all replacement screen right fit shakers operated at oilfield. All screens conform to API RP13C. Call us for more detail



Parts

AIPU maintains a comprehensive parts inventory for all the systems, machines and components it provides to its customers. Besides, we supply clients other famous interchangeable parts in oilfield



Support

AIPU team will always provide best support in the industry to you. We build and understand engineering behind each piece of AIPU product. Technical support and sales-service are available as 24 hours 7 days

AIPU® Solids Control

- Headquarter: Shaanxi Aipu Machinery Manufacture Co., Ltd.
 - Tel: +86-29-63611979 63611978
 - Email: Sales@apmudequipment.com
 - Site: www.aipusolidcontrol.com www.apmudequipment.com
 - Add.: 4th Jingyuan Road Jinghe Industry Zone, Xi'an, China
-
- Branch: Beijing Aipu Oilfield Services Co., Ltd.
 - Tel: +86-15133968659
 - Email: Sales@aipusolidcontrol.com
 - Site: www.aipusolidcontrol.com www.apmudequipment.com
 - Add.: Huatang Gulf, Dongyanjiao Area, Beijing